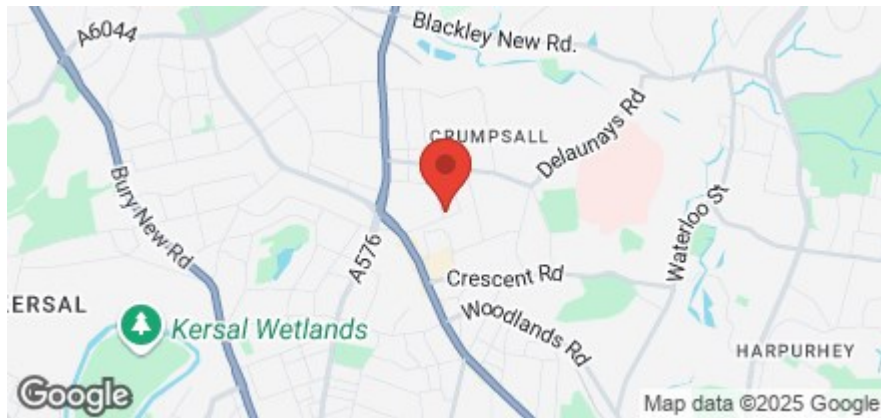






Galaxy A23 5G

Area Map



Details:

Nestled on the charming St. Marys Hall Road in Manchester, this delightful flat offers a perfect blend of modern living and convenience. Built in 2005, is an ideal choice for individuals or couples seeking a low-maintenance home.

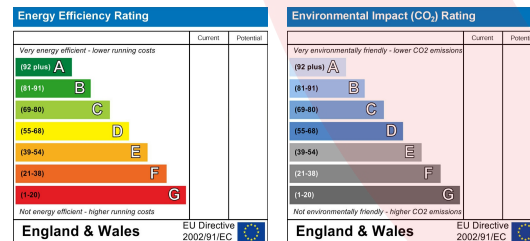
This property is not only practical but also benefits from its prime location. Residents will find themselves within easy reach of local amenities, including shops, cafes, and public transport links, making it a convenient base for exploring all that Manchester has to offer.

Whether you are a first-time buyer or looking to invest in a rental property, this flat presents an excellent opportunity. With its modern features and prime location, it is sure to appeal to those seeking a stylish and functional living space in the heart of the city. Do not miss the chance to make this charming flat your new home.

Viewing

Please contact us on 0161 773 3978 if you wish to arrange a viewing appointment for this property or require further information.

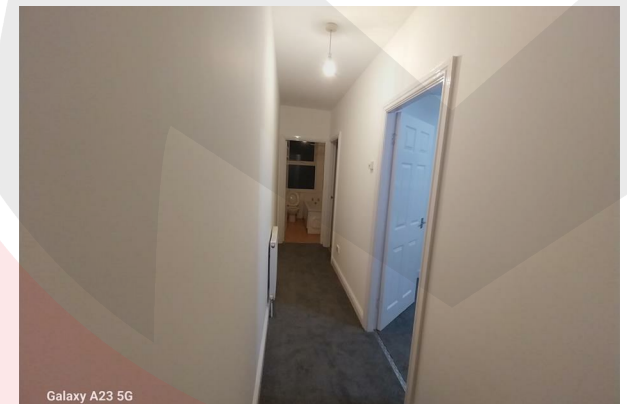
Energy Efficiency Graph



Galaxy A23 5G



Galaxy A23 5G



Galaxy A23 5G

These particulars, whilst believed to be accurate are set out as a general outline only for guidance and do not constitute any part of an offer or contract. Intending purchasers should not rely on them as statements of representation of fact, but must satisfy themselves by inspection or otherwise as to their accuracy. No person in this firm's employment has the authority to make or give any representation or warranty in respect of the property.

3 Middleton Road, Manchester, M8 5DT

T: 0161 773 3978 | F: 0161 211 3573 | enquiries@amcomanagement.com

www.amcomanagement.com

